



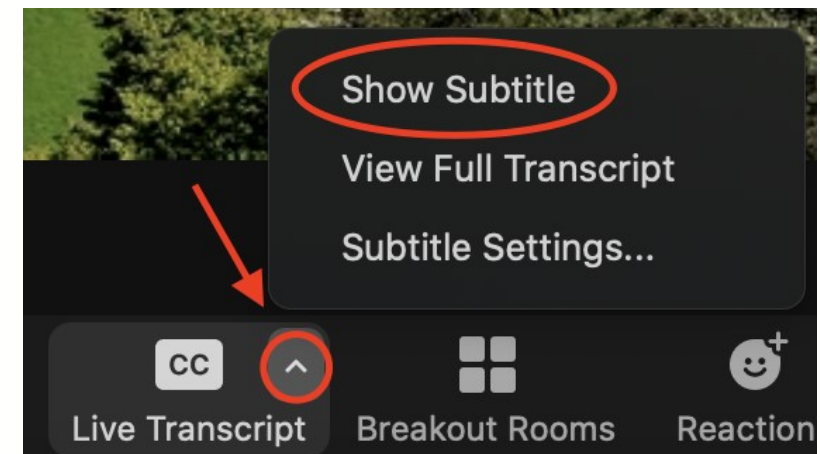
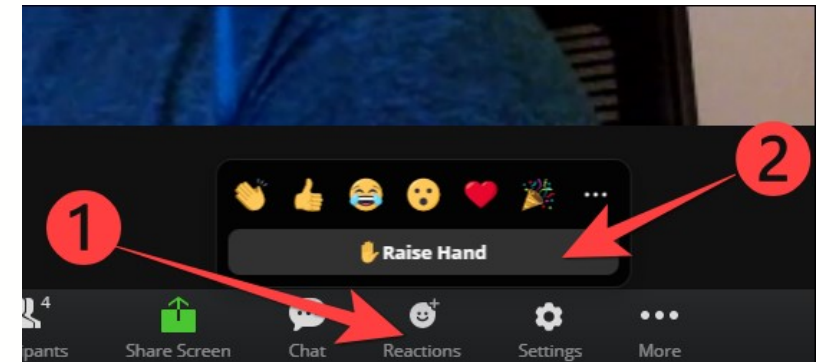
# PeIEX

## 2025 Member Event

June 30, 2025

# Housekeeping

- ◆ This is a Zoom meeting
- ◆ Please mute yourself when you are not actively speaking.
- ◆ We encourage you to use video, chat, & raise hand functions.
- ◆ If you would like to ask a question, please use the Q&A function on the taskbar
- ◆ Live transcription can be turned on via the taskbar
- ◆ Use the chat feature to introduce yourself (name, org, location), share resources, etc.
- ◆ Recording and transcription will be disseminated post-event.



# Agenda

## Statement on the Theme

### “People in Process”

Mark Keiser | CEO, Access Health Louisiana

## Executive Update

Tom Carton | Executive Director

## Product Briefing

Samantha Euraque | Associate Director of Data Strategy and Services

Van Le | Program Manager

## Member Showcase: Individual Showcases

### Presenters

- Access Health Louisiana
- Metropolitan Human Services District

## Break

## Member Showcase: Group Showcase

Presented by PeLEX

## Closing Remarks

Tom Carton | Executive Director

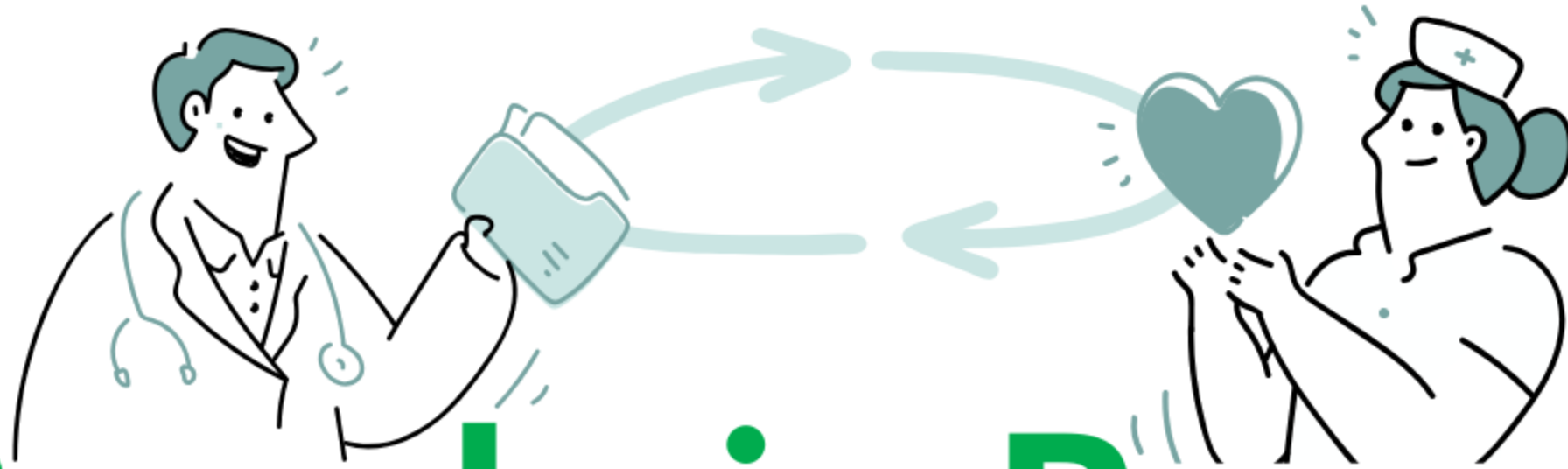
# Statement on the Theme

Mark Keiser

CEO, Access Health Louisiana

Board of Directors Chair, PATH

## Statement on the Theme



# People in Process

# Executive Update

Tom Carton

Executive Director, PeLEX

# PeLEX Team



**Tom Carton**  
Chief Data & Strategy Officer  
Executive Director



**Samantha Euraque**  
Associate Director,  
Data Strategy & Services



**Van Le**  
Program Manager



**Fred Blanche**  
HIPAA Privacy & Compliance Officer



**Huahong Qiang**  
Principal Engineer



**Kyleah Frederic**  
Software Engineer

# PeLEX Strategic Overview

## A Healthier Louisiana

Obj 1.1. Manage and grow our suite of products and services designed to support the Medicaid population and value-based care

Obj 1.2. Acquire new data assets within Rural areas of the state

Obj 1.3. Define Data Quality project

## A Thriving Organization

Obj 2.1. Refine the participant network quality of engagements

Obj 2.2. Secure and diversify funding

## Partnerships and Collaboration

Obj 3.1. Grow the participant network to all 9 Public Health Regions

Obj 3.2. Formalize 2 partnerships needed to provide high-quality data and support services

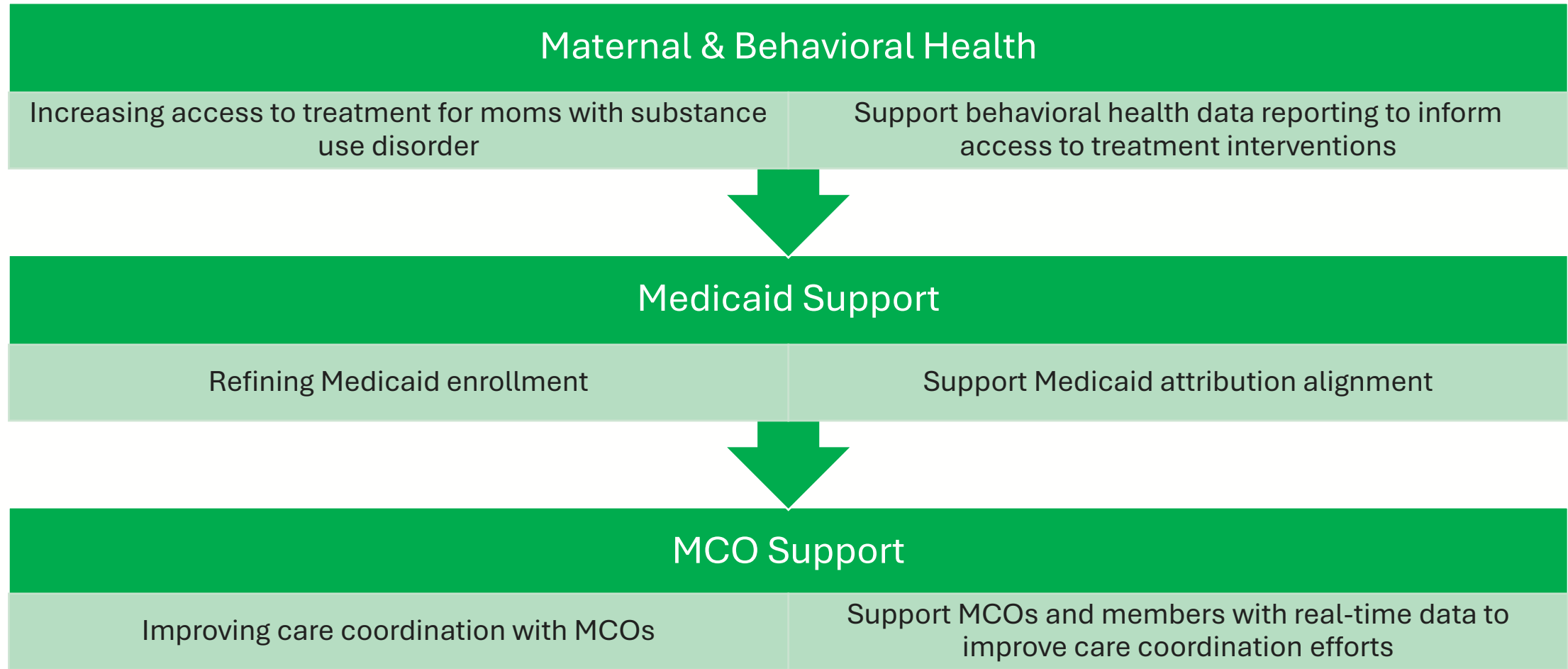
## Racial Justice and Health Equity

Obj 4.1. Incorporate individual level SDOH data into PeLEX.

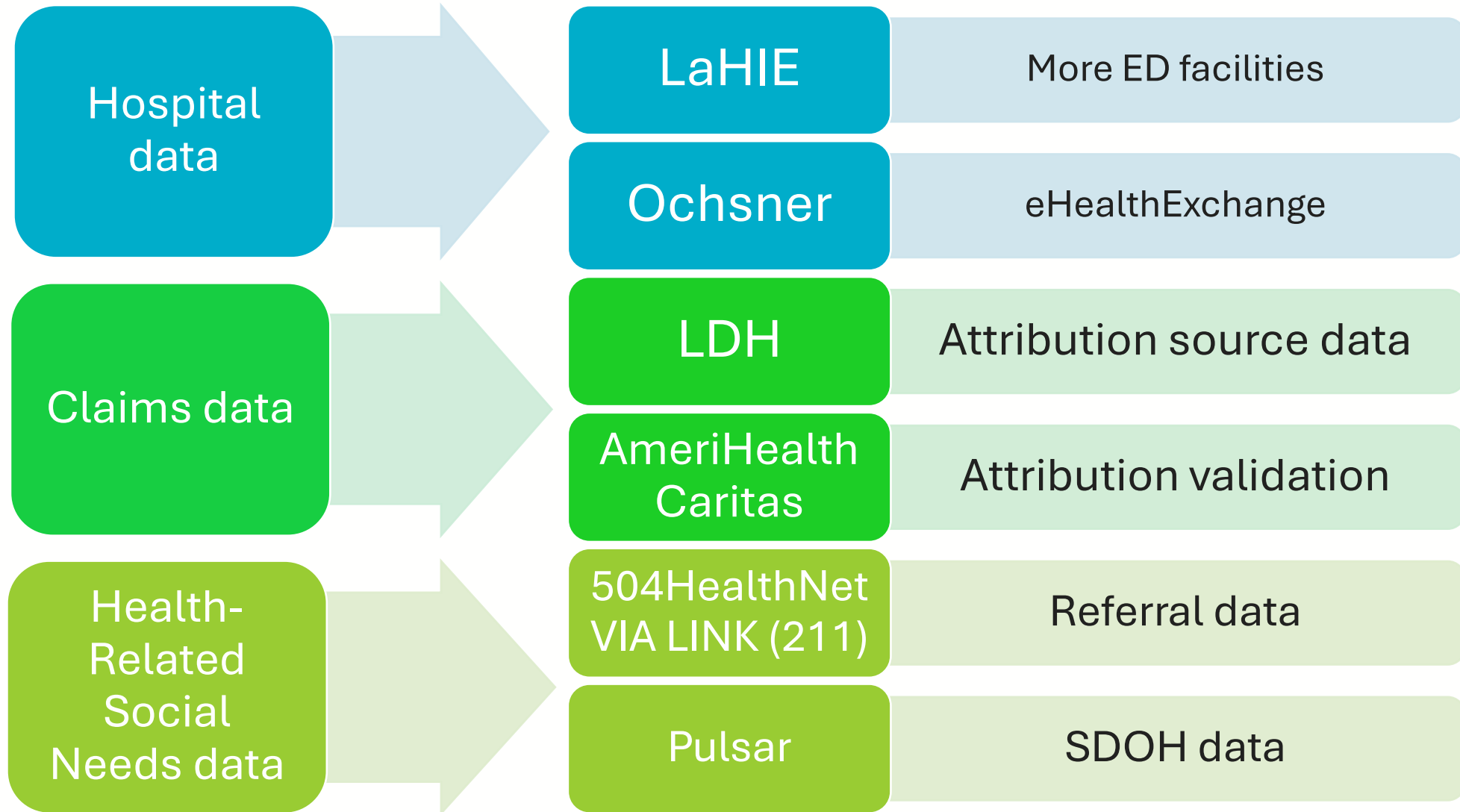
Obj 4.2. Build partner capacity to advance equitable data Practices

# State/LDH Priorities

# LPHI Priorities

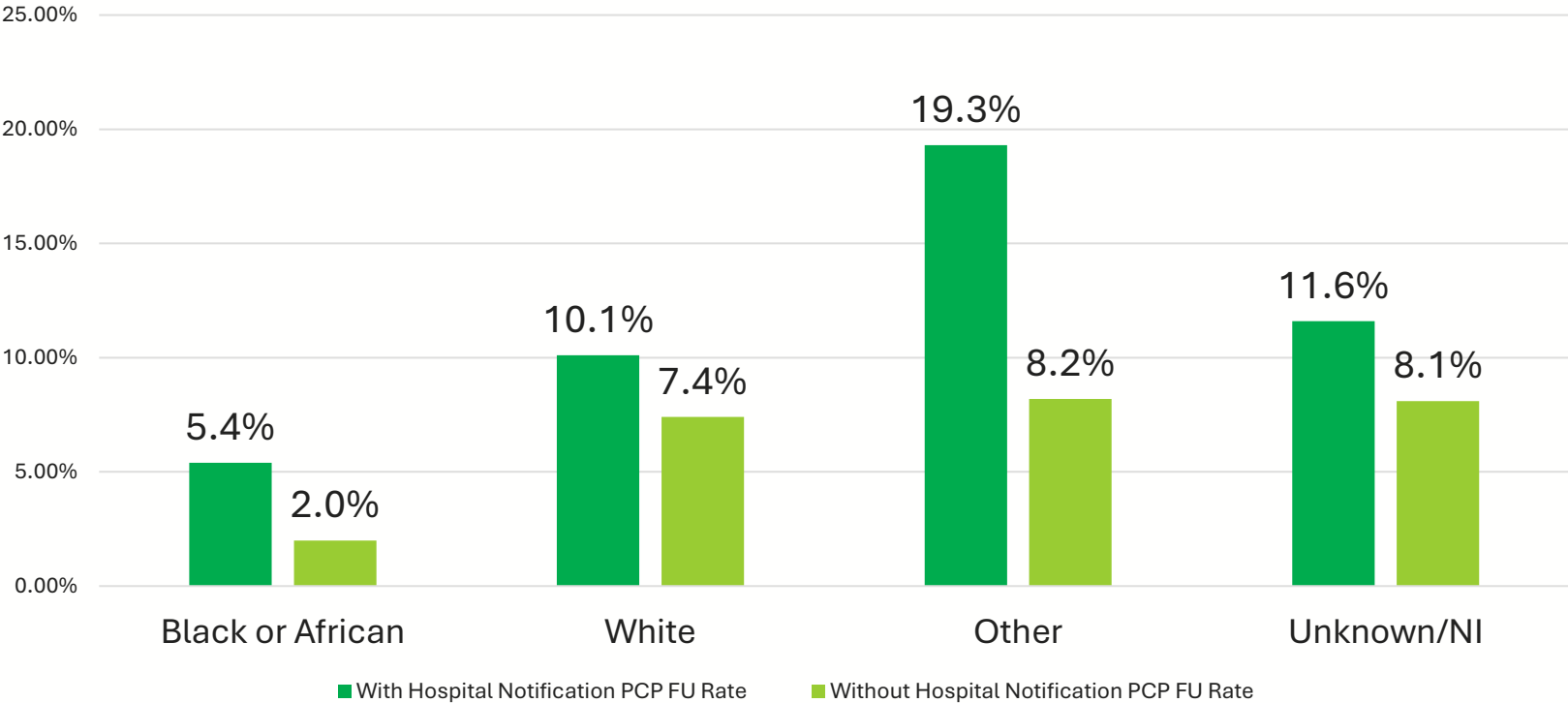


# Expanding Data through Cultivating Partnerships



# PeLEX Hospital Notifications Increase Primary Care Physician Follow-up

PCP Follow-Up after Emergency Department  
and In-Patient Admission  
*June 1, 2023-May 31, 2024*



## A Behavioral Health Organization

Our care coordination team contacted a patient's primary care provider because of the PeLEX report and found out our patient had chronic hepatitis which was not known to us before. Our clinical team was able to update the patient's chart and our prescribers will be addressing the patient's chronic illness during clinic.

# Product Briefing

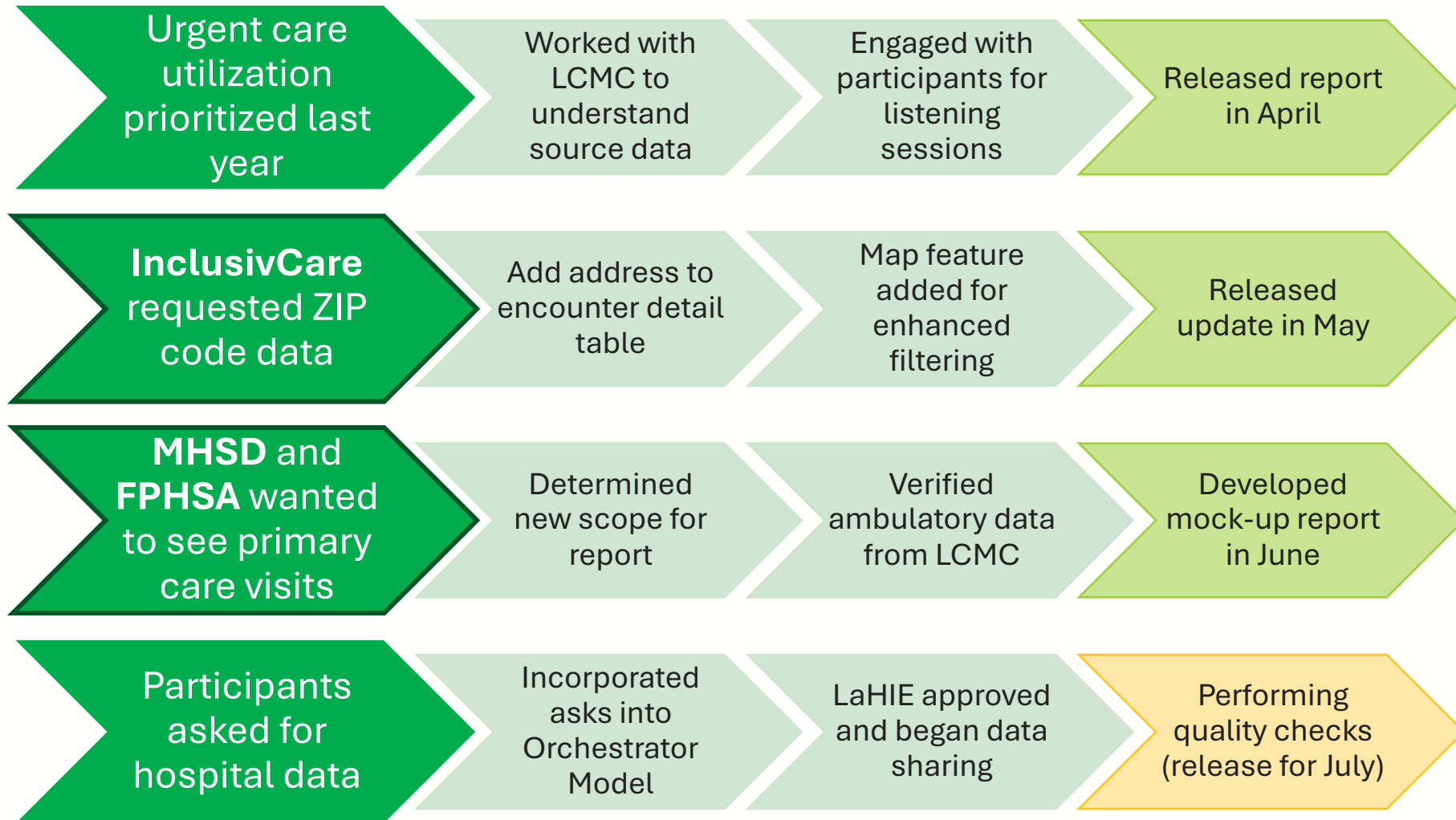
Samantha Euraque

Associate Director of Data  
Strategies and Services

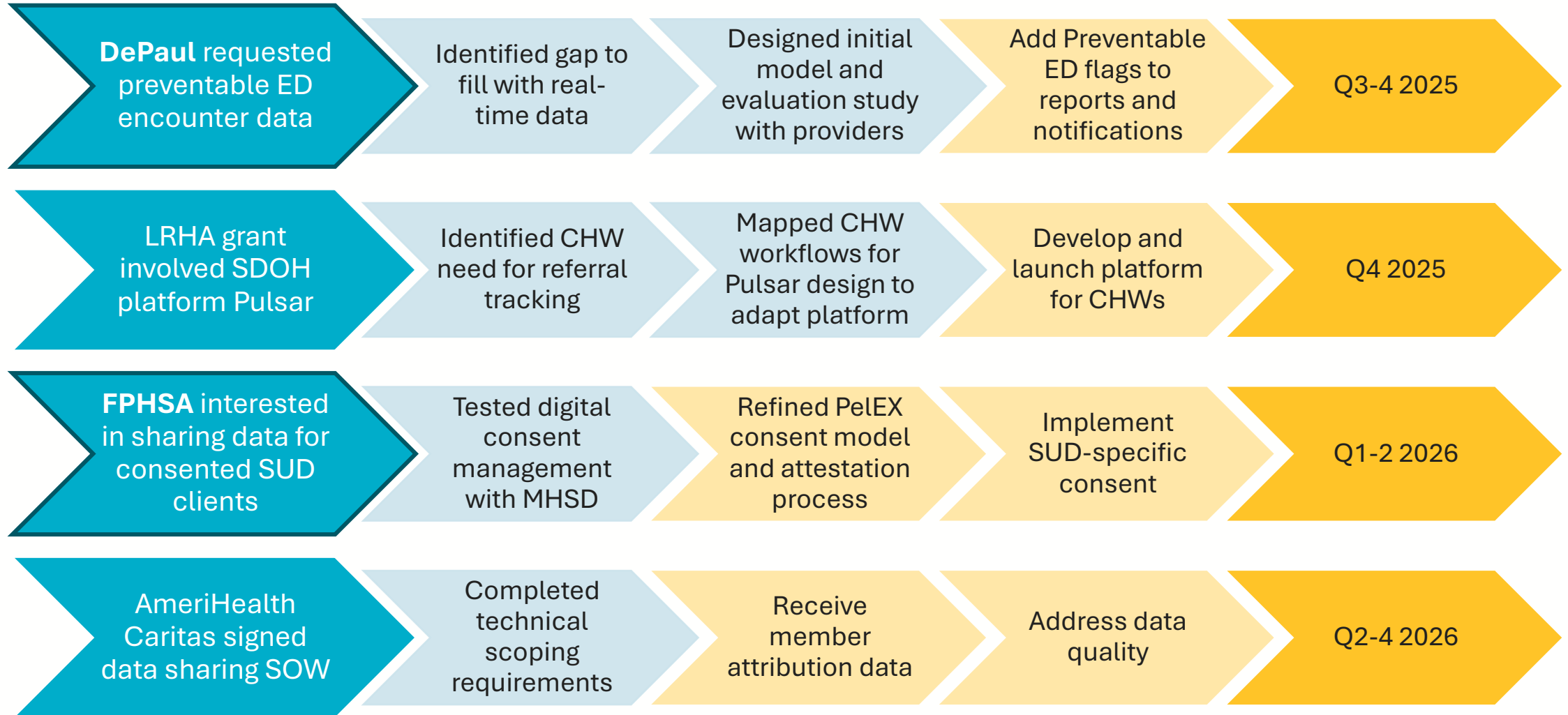
Van Le

Program Manager

# Development Highlights



# Coming Soon



# People in Process

## Individual Member Showcases

**How People, Processes, and Technologies  
Hindered a Universal Screening Effort to  
Address Patients' Non-Medical Needs +  
Finding Solutions to Move Forward**

*Access Health Louisiana*

**Chatrian Roberson, MPH**

*Sr. Vice President of Population Health*

**Lee Reilly, RN**

*Director of Value-Based Contracts and Network  
Performance,*

**Bridging the Gap: Leveraging Hospital  
Utilization Reports to Improve Continuity of  
Care**

*Metropolitan Human Services District*

**Dr. Desiree Stelly, DNP, RN**

*Director of Nursing*

**Dr. Dominique London, Pharm.D.**

*Pharmacy Liaison*

# Report Out

5-10 minutes

Did you learn something from the showcase that you hope to implement into your processes?



**BREAK**

Back in 10 minutes

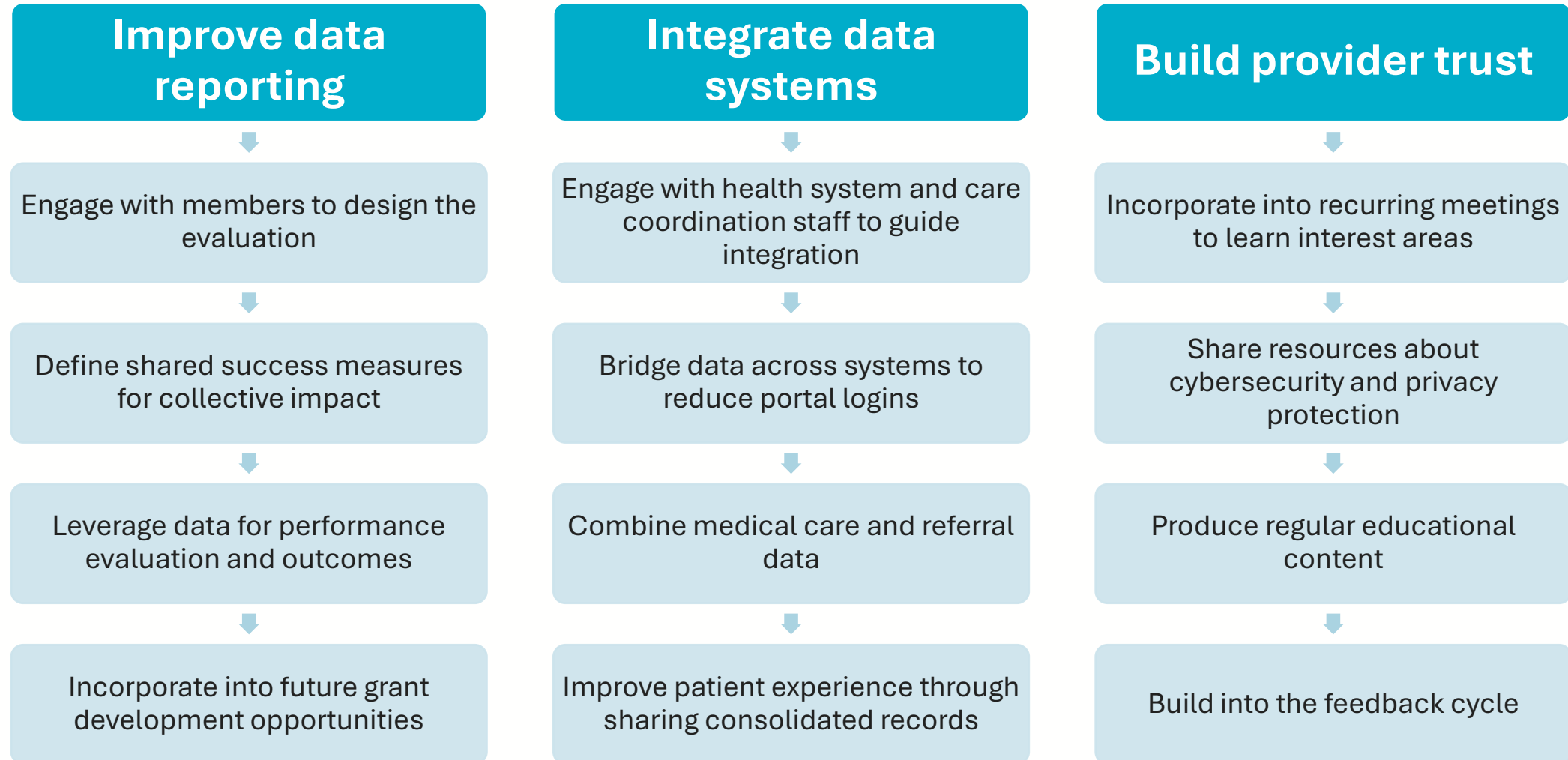
# **People in Process**

## Group Member Showcases

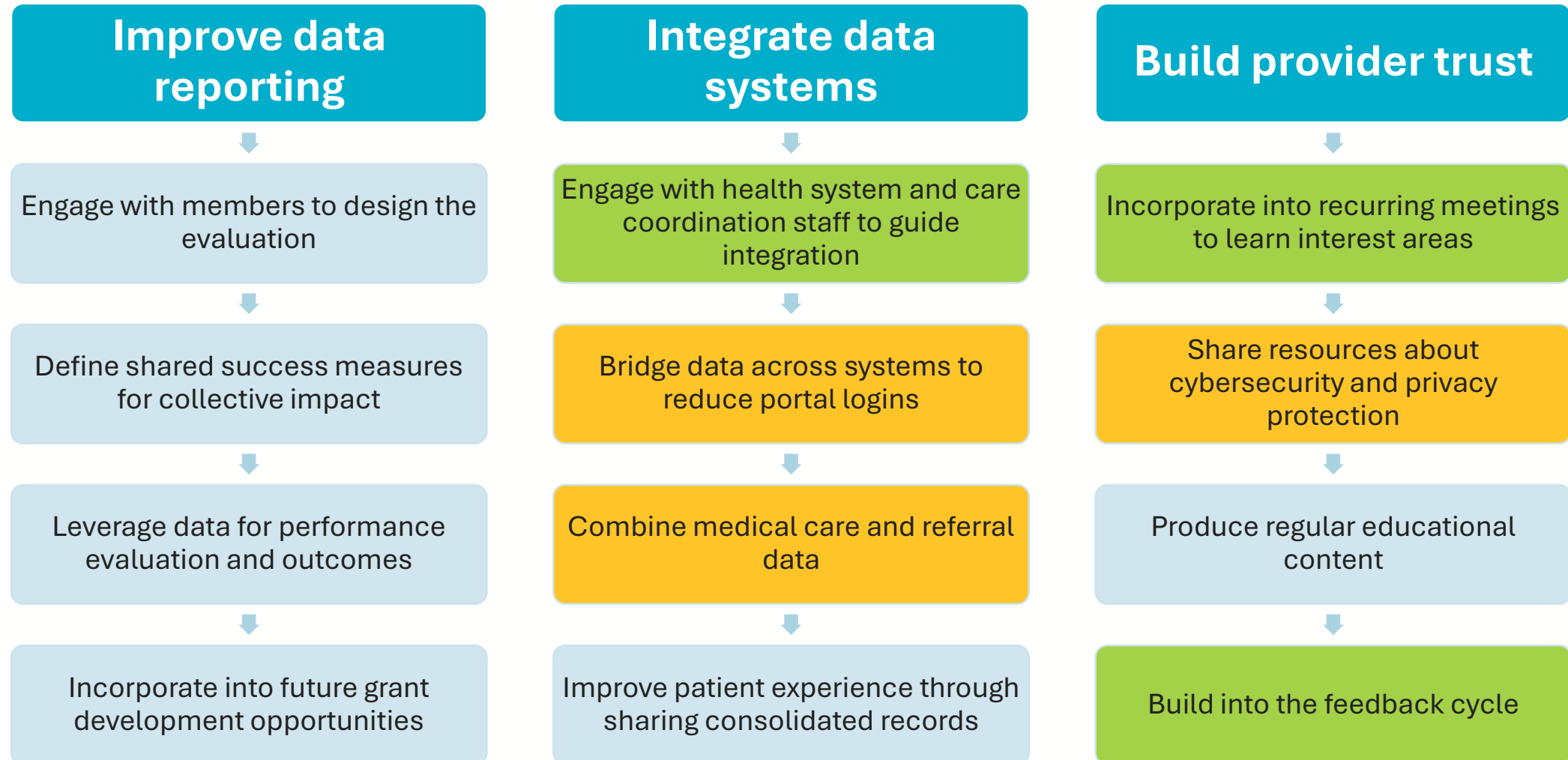
**How PeLEX participant engagement  
enhances services for all**

*Presented by:  
Sam Euraque and Van Le*

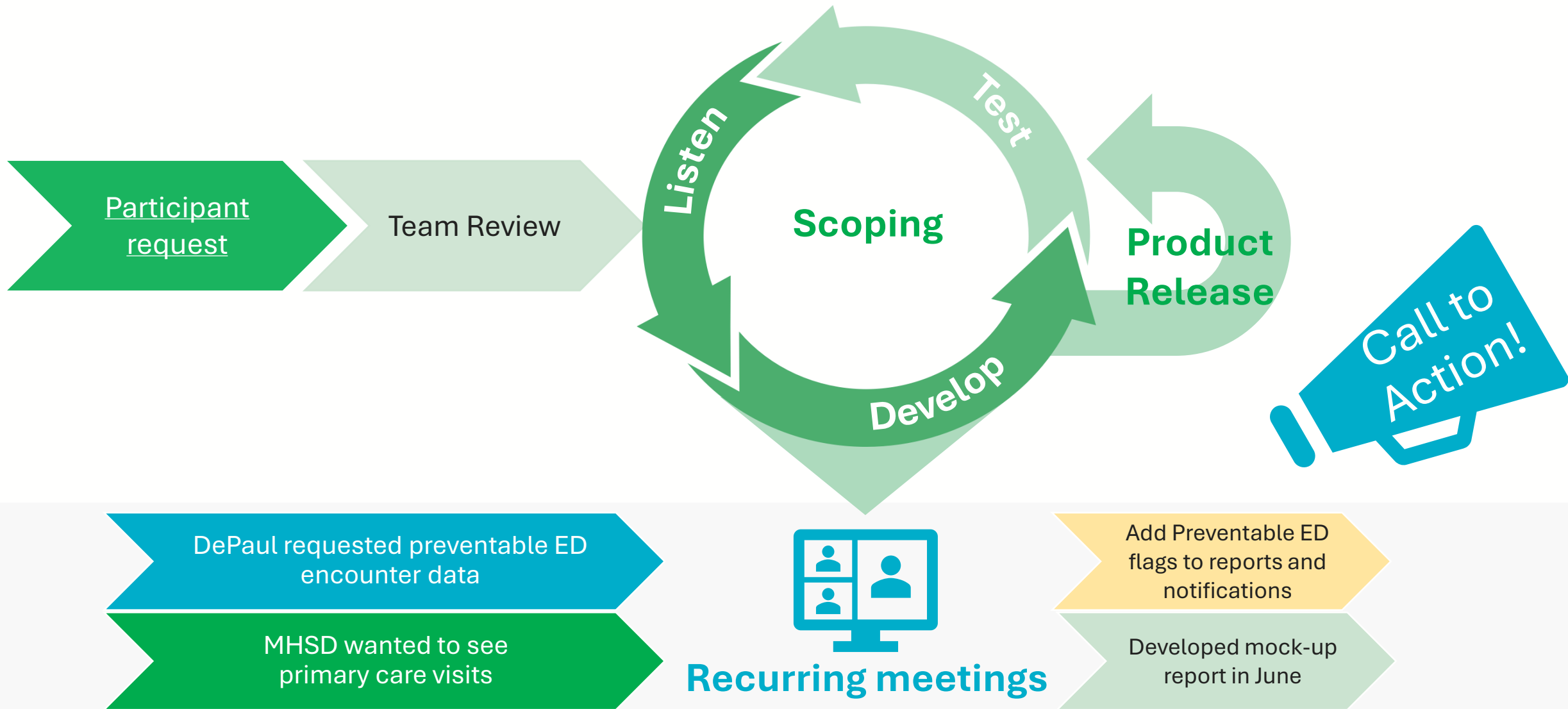
# Partner Engagement: 504HealthNet Summit



# Partner Engagement: 504HealthNet Summit



# Participant Development Process



# Pulse Poll

Did you learn something exciting or meaningful from today's event and activities?



Reminder

# Annual Engagement Meetings

## Purpose

- ◆ Strategic planning
- ◆ Your time to tell us your needs
- ◆ Handle administrative business



# After the Event

- ◆ Complete the [Satisfaction Survey](#)  
(found in the attendee guide and in chat)
- ◆ Keep an eye out for materials





# PeLEX

## 2025 Member Event

June 30, 2025



# Thank you!

 [lphi.org](http://lphi.org) | [pelexhie.org](http://pelexhie.org)

 [support@pelexhie.org](mailto:support@pelexhie.org)

